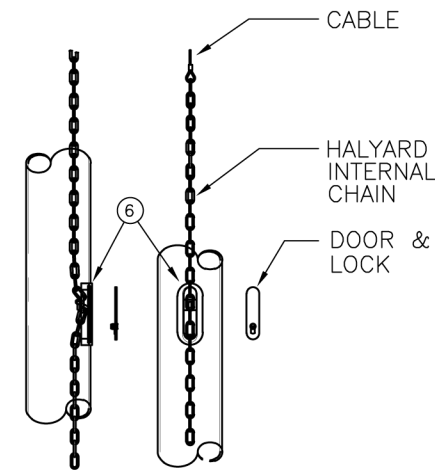
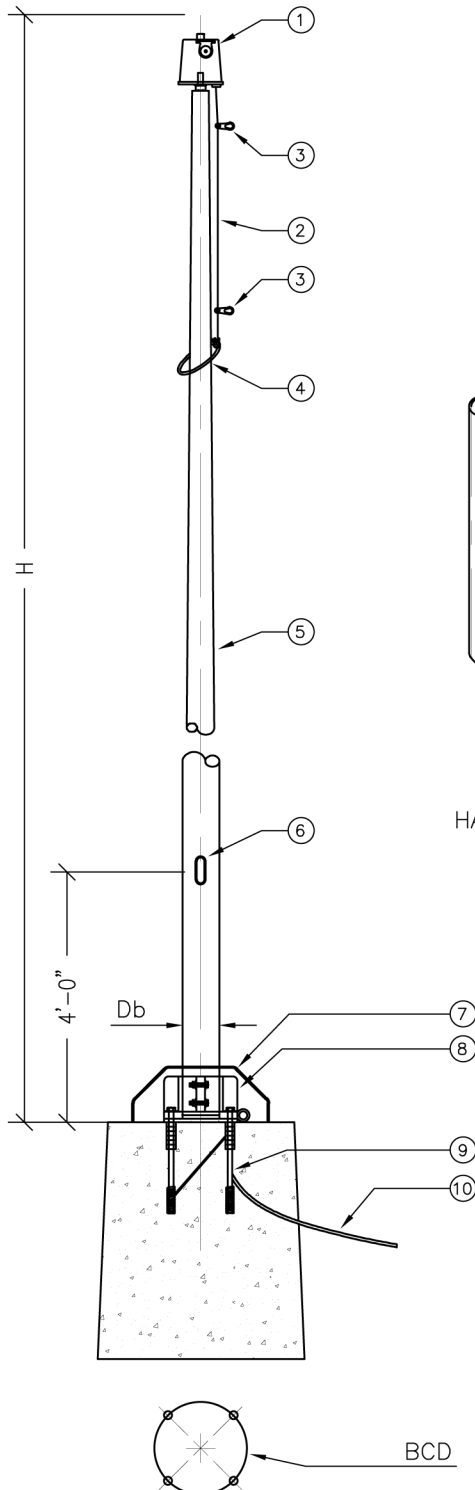


# The Flag Shop

AUTHORIZED **EWING** DEALER

## EWING ARCHITECTURAL FLAGPOLES



MODEL  
HCAN (CONE TAPERED ALUMINUM)  
BASE  
TYPE "B-7" TILTING  
HALYARD  
ECONOLINE INTERNAL SYSTEM

### MATERIAL LIST

NO	DESCRIPTION	MAT'L	QTY
1	CAP	ALUM	1
2	HALYARD LINE		1
3	FLAG SNAP	ST ST	2
4	WEIGHTED LOOP	NYLON	1
5	TAPERED POLE	ALUM	1
6	ACCESS DOOR	ST ST	1
7	BASE COVER	ALUM	1
8	TILTING BASE	STEEL	1
9	ANCHOR CAGE	STEEL	1
10	LIGHTNING CABLE	STEEL	1

### POLE FINISH

- ☐ SATIN BRUSHED
- ☐ CLEAR ANODIZED
- ☐ CLEAR ANODIZED POWDER COAT
- ☐ STANDARD BRONZE ANODIZED
- ☐ BLACK ANODIZED
- ☐ POWDER COAT

### DIMENSIONS

MODEL	POLE	
	H	Db
HCA16N	16'-0"	5"
HCA20N	20'-0"	5"
HCA25N	25'-0"	5"
HCA30N	30'-0"	5"

### NOTES

1. ALUMINUM ALLOY 6063-T6.
2. EWING IS NOT RESPONSIBLE FOR THE REINFORCED CONCRETE FOUNDATION. CONSULT A CIVIL OR SOIL ENGINEER REGARDING LOCAL SOIL CONDITIONS PRIOR TO SPECIFYING OVERALL FOUNDATION DIMENSIONS.
3. ALTERATIONS OF ANY KIND TO FLAG POLE VOIDS ALL WARRANTIES.
4. THIS DRAWING IS THE PROPERTY OF EWING FLAGPOLE.

winnipeg@flag-shop.ca

flag-shop.ca

saskatoon@flag-shop.ca